



DECADE

RESOURCES

TSXV: DEC | MARCH 2026 INVESTOR PRESENTATION



DISCLAIMER

This Presentation is for information purposes in connection with Decade Resources Ltd. or the "Company"(s) preliminary business plan only. While the information contained herein has been prepared in good faith, neither the Company nor any of its shareholders, directors, officers, agents, employees, consultants or advisers give, have given or have authority to give, any representations or warranties (express or implied) as to, or in relation to, the accuracy, reliability, completeness or suitability of the information in this Presentation, or any revision thereof, or of any other written or oral information made or to be made available to any interested party or its advisers (all such information being referred to as "Information") and liability therefore is expressly disclaimed. Accordingly, neither the Company nor any of its shareholders, directors, officers, agents, employees, consultants or advisers, take any responsibility for, or will accept any liability whether direct or indirect, express or implied, contractual, tortious, statutory or otherwise, in respect of the accuracy or completeness of the Information or for any of the opinions contained herein or for any errors, omissions or misstatements or for any loss, howsoever arising or out of or in connection with the use of this Presentation. Each party to whom this Presentation is made available must make its own independent assessment of the Company and the Presentation after making such investigations and taking such advice as may be deemed necessary. Any reliance placed on the Presentation is strictly at the risk of such person relying on such Presentation. This Presentation may contain forward-looking statements regarding the Company and its subsidiaries, including statements with respect to workplans of the Company. These statements are based on various assumptions made by the Company. Such assumptions are subject to factors which are beyond our control and which involve known and unknown risks, uncertainties and other factors which may cause our actual results, performance or achievements to be materially different from any future results, performances or achievements expressed or implied by the forward-looking statements. Forward-looking statements may in some cases be identified by terminology such as "may", "will", "could", "should", "expect", "plan", "intend", "anticipate", "believe", "estimate", "predict", "potential" or "continue", the negative of such terms or other comparable terminology. These forward-looking statements are only predictions. Actual events or results may differ materially, and a number of factors may cause our actual results to differ materially from any such statement. Such factors include among others general market conditions, demand for our products, development in reserves and resources, unpredictable changes in regulations affecting our markets, market acceptance of products and such other factors that may be relevant from time to time. Although we believe that the expectations and assumptions reflected in the statements are reasonable, any person relying on such Information and Presentation are cautioned that we cannot guarantee future results, levels of activity, performance or achievement. In preparing this Presentation and except as required by law, we do not undertake or agree to any obligation or responsibility to provide the recipient with access to any additional information or to update this Presentation or Information or to correct any inaccuracies in, or omission from this Presentation or to update publicly any forward-looking statements for any reason after the date of this Presentation to conform these statements to actual results or to changes in our expectations. This Presentation does not constitute an offer or invitation to sell, or any solicitation of any offer to subscribe for or purchase any securities of the Company and its subsidiaries and nothing contained herein shall form the basis of any contract or commitment whatsoever. Copies of this Presentation should not be distributed to any affiliates, third parties or indirect recipients in any manner whatsoever. The distribution of this Presentation in or to persons subject to other jurisdiction may be restricted by law and persons into whose possession this Presentation comes should inform themselves about and observe any such restrictions. Any failure to comply with these restrictions may constitute a violation of the laws of the relevant jurisdictions. This Presentation is strictly confidential and may not be reproduced, disseminated or used without the express and written consent of the Company. The Information in this Presentation concerning the business and its affairs, shareholders, directors, officers, agents, employees, consultants or advisers or any other matter must be kept confidential at all times. If the Company suffers loss, damage or liability of any kind in connection with your breach of the restriction on reproduction or use, you will indemnify the Company from and against such loss, damage or liability. The information contained in this presentation, including information provided by third parties, has not been independently verified and no representation or warranty, express or implied, is made as to, and no reliance should be placed on, the fairness, accuracy, completeness, correctness or timeliness of the information or opinions expressed herein. Similarly, certain graphics contained in this presentation have been provided by third parties and no reliance should be placed on such graphics being representations of the Company and its projects. Scientific and technical information regarding the Del Norte property and contained in this Presentation has been reviewed, prepared and approved by Ed Kruchkowski, P. Geo President, Exploration of the Company, who is a "Qualified Person" as defined by NI 43-101. Scientific and technical information regarding the Del Norte property contained in this Presentation is based on information obtained by the Company and historical reporting. The Company thinks that the historical exploration has been carried out according to industry standards and can be relied on.



TSXV: DEC | decaderesources.ca

CONTACT INFORMATION

611 – 8th Street, Box 211

Stewart, BC Canada

V0T 1W0

decadeinvestorrelations@outlook.com

Investor Relations

Gary M. Assaly

604-377-7969

garymassaly@hotmail.com

Decade Resources Ltd. is a Canadian based mineral exploration company actively seeking opportunities in the resource sector. Most of the properties are located in the “Golden Triangle Area” of BC. This area hosts some of the largest and highest-grade gold deposits and large undeveloped copper deposits in the world. The Company has a 65% interest in the Red Cliff property, a former copper-gold producer in the early 1900’s in north-western British Columbia. It has 100% in the Terrace area properties. It has earned a 55% interest in the Del Norte and can earn an interest in the Lord Nelson property under a farm in agreement. It has a purchase agreement for a 70% interest in the North Mitchell property and a 80% in the Bonaparte property through stock issuance. ³

GOLDEN TRIANGLE : DEPOSIT TYPES

- Besshi and Kuroko VMS deposits (Granduc, Anyox, Eskay and BA)
- Epithermal gold-silver deposits (Brucejack Lake, Premier and Eskay)
- Porphyry copper-gold (KSM deposits, Bronson Slope, Galore Creek, Red Chris)
- Porphyry gold +/- copper molybdenum (Snowfields and Treaty Creek)
- Polymetallic veins with silver, lead, zinc, +/- gold and +/- copper (Surebet, Porter Idaho and Del Norte).
- Mesothermal veins with gold-silver(Snip and Scottie Gold)
- Nickel-copper in ultramafic intrusive (Nickel mountain)



The Golden Triangle has reported mineral resources (past production and current resources) totaling 200 million ounces of gold, 569 million ounces of silver and 27 billion pounds of copper.



INVESTMENT SUMMARY

Strategic B.C. Land Package

Extensive exploration portfolio in Golden Triangle area of British Columbia.

Indicated High-Grade Gold Silver and Copper Assets

Historical results and Company results have demonstrated significant high-grade intercepts.

Significant Expansion Potential

Exploration indicates multiple mineralized zones are open along strike and at depth.

Experienced Management Team

Strong technical team with a track record of discovery.

DECADE RESOURCES	
Mineral Properties in Northwest BC	
SKEENA MINING DIVISION, BRITISH COLUMBIA	
DATE:	May, 2020
SCALE:	1:1,100,000 on Bx11
PROJECTION:	UTM ZONE 9, NAD 83
DRAWN BY:	A. TUCK

PROPERTIES

Terrace (Copper River)-4 Properties – 100%

- North Area - 8 claims – 8,575.88ha
- Nobody Knows – 6 claims – 6,870.79ha
- Dardanelle – 15 claims – 1,424.27ha
- Treasure Mountain – 30 claims-11,852.24ha

Red Cliff – 65%

- 8 Crown Granted claims – 126.14ha

Del Norte – earned 55%

- 13 claims – 5,830.16ha

Bonaparte – purchase of 80% through stock issuance

- 3 claims – 2,969.6ha

PROPERTIES cont'd

Lord Nelson – ability to earn 55%

- 6 claims – 2,630.61ha

North Mitchell – purchased 70% through stock issuance

- 1 claim – 963.45ha

SB – 100%

- 1 claim – 1,742.33ha

Photo showing drill roads on the Red Cliff joint venture claims.



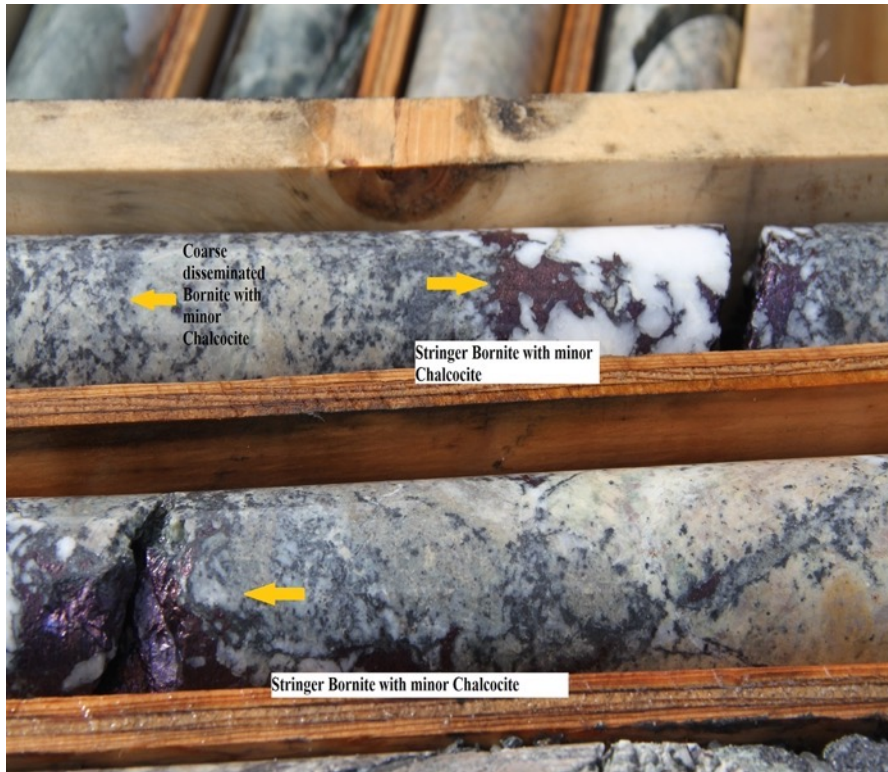
NOBODY KNOWS – COPPER TERRACE AREA

- The discovery drill holes show similarities to many of the world's major sediment-hosted copper systems with the direct correlation of enhanced silver with enhanced copper values.
- Coarse disseminated and stringer type visual copper sulphide (dominantly bornite and minor chalcocite) occur in felsic rocks.
- Disseminated copper sulphide (dominantly chalcopyrite) is associated with the bornite/chalcocite mineralization.
- Copper mineralization is present as ground up sulphides (bornite) within fault gouge.
- Copper mineralization has been outlined along 200m of strike and to a depth of 150m
- Location in an area of extensive logging roads that aid in future exploration.

Drill Hole	From (m)	To (m)	Width (m)	Ag g/t	Cu %
DDH-NB-23-1	11.13	16.89	5.76	8.18	1.115
including	14.48	15.27	0.76	50.3	6.75
DDH-NB-23-2	9.45	17.50	8.08	45.82	1.86
including	9.45	11.59	2.13	155.0	5.39
including	15.16	16.16	0.61	13.05	1.47
DDH-NB-23-3	11.46	14.66	3.20	14.57	1.42
including	11.16	13.05	1.59	27.8	2.61
including	28.62	29.66	3.05	11.65	1.67
DDH-NB-23-12	15.85	25.30	9.45	11.23	1.08
and	15.85	18.29	2.94	27.3	2.99
DDH-NB-23-13	17.9	20.88	2.99	22.6	2.72
DDH-NB-23-14	15.05	17.68	2.59	21.5	2.13
DDH-NB-23-16	57.62	63.41	5.74	15	2.05
DDH-NB-23-27	19.21	20.43	1.22	5.52	2.53
DDH-NB-24-01	66.16	66.77	0.61	72.59	1.64
and	71.83	73.48	1.65	20.97	1.61
DDH-NB-24-03	44.36	44.97	0.61	54.42	3.41
and	50.82	52.38	1.55	18.41	2.26
and	56.92	58.54	1.62	17.81	2.12
and	64.94	76.92	11.98	10.36	1.25
and	72.56	76.92	4.36	23.70	2.69
DDH-NB-24-04	40.21	42.80	2.59	15.63	1.42
DDH-NB-24-13	77.80	79.88	2.07	43.48	3.18

NOBODY KNOWS – COPPER TERRACE AREA

CORE FROM DDH – NK-23-02



NOBODY KNOWS – COPPER TERRACE AREA

photos of DDH-NK-23-08 core

Bornite and Chalcocite in DDH-23-NB-8



Bornite and Chalcocite in DDH-23-NB-8



**Felsic flow rock with bornite
and chalcocite**



NOBODY KNOWS – GOLD BOULDER AREA

- The gold bearing blast rock contains sulphide cluster giving the texture impression of an intrusive rock.
- Sulphides include arsenopyrite, pyrite, sphalerite, chalcopyrite and galena.
- The host rock is almost entirely muscovite and quartz. No mafic minerals are noted in the blast rock.
- Red soil containing the boulders have small rusty, totally weathered sericite fragments.
- The source area has abundant iron from weathering allowing for the creation of ferrocrete, basically gravel cemented by rust.
- Some of rocks collected are massive arsenopyrite, none of which have been assayed yet.
- Some rocks contain massive sphalerite as seen in assays released on August 6 2024 (27.15 % in JN-24-4).
- The surface of the rocks is highly pitted as seen in the photos below with a yellow arsenic stain on broken surfaces.
- High values in gold-silver-copper-lead-zinc associated with arsenopyrite and elevated bismuth and cobalt from select grab samples.
- Samples are from excavated rock used to cover road material located along a spur logging trail.
- Samples obtained indicated a 200 m section of road containing these boulders.
- Numerous mineralized rocks were collected but only 16 samples were assayed.
- Sampling in late 2024 indicates anomalous gold and arsenic in bedrock just SW of the blast rock area.

NOBODY KNOWS – GOLD BOULDER AREA



NOBODY KNOWS – GOLD BOULDER AREA

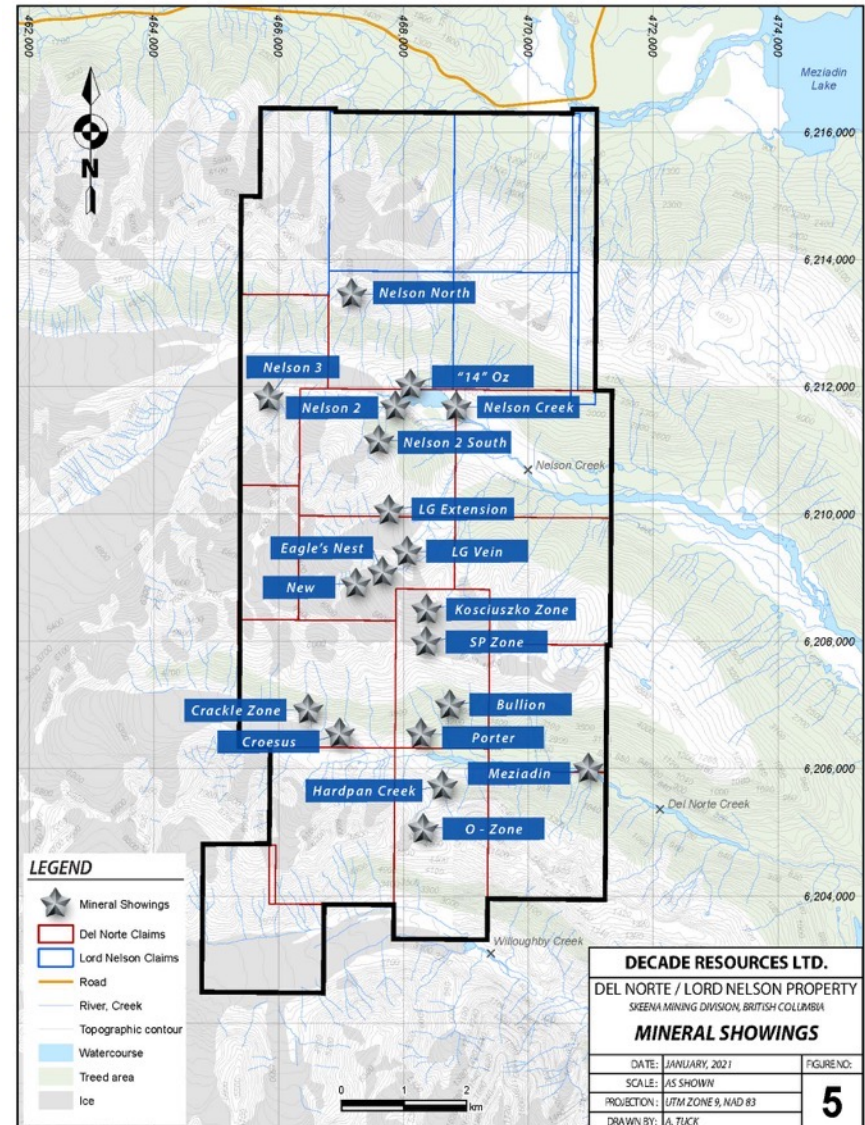
Sample #	Au g/t	Ag g/t	Cu %	Pb %	Zn %
24-Jn-1	40.24	108	0.86	0.11	0.65
24-Jn-2	28.62	58.99	0.3	0.08	0.55
24-Jn-3	39.03	169	1.226	0.12	0.74
24-Jn-4	17.043	927	2.32	7.93	27.15
24-Jn-5	79.12	690	2.192	3.27	14.22
24-Jn-6	19.33	99.39	0.5	0.11	2.08
24-Jn-7	10.603	178	1.119	0.9	23.36
24-Jn-8	10.655	49.04	0.19	0.18	0.53
24-Jn-9	0.185	3.35	0.043	0.007	0.05
24-Jn-10	40.94	142	0.41	0.11	0.73
24-Jn-11	31.57	96.23	0.41	0.61	1.27
24-Jn-12	34.27	251	1.426	0.23	3.87
24-Jn-13	9.517	168	0.77	0.25	4.33
24-Jn-14	36.59	230	1.613	0.32	4.2
24-Jn-15	50.82	363	1.373	2.02	9.59
24-Jn-16	37.32	159	0.4	0.08	0.18

Photo Showing Massive Sulfide Bands

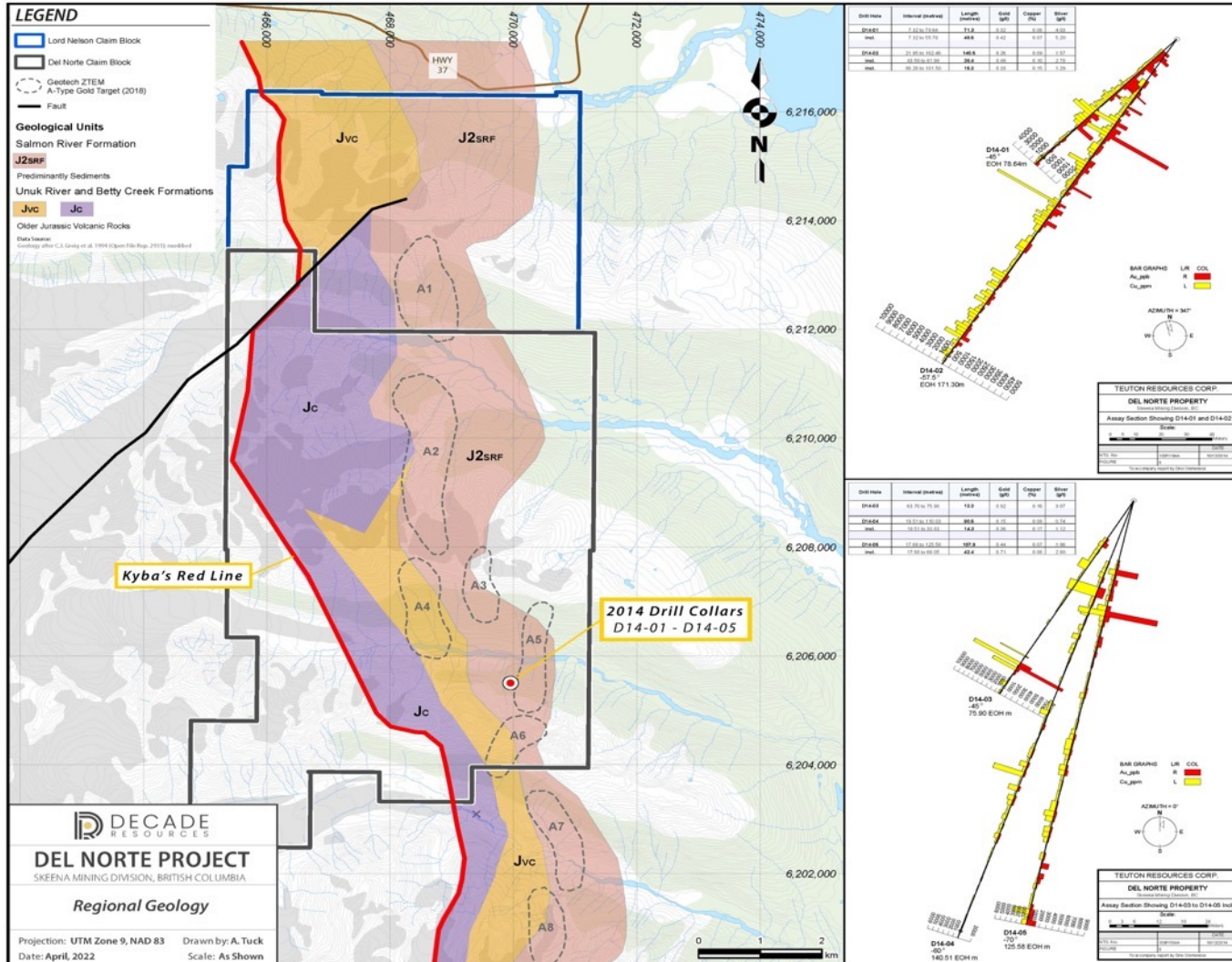


DEL NORTE

- A zone of porphyry copper-gold mineralization has been intersected in 2014 and 2016 drilling the Del Norte property.
- Drilling was in the area of identified ZTEM anomalies.
- A magnetotelluric survey shows high zones of conductivity adjacent to the area drilled.
- Identical geological setting to the Treaty Creek gold-copper porphyry.



DEL NORTE



DEL NORTE

2020 – 2021 DECADE Drill Highlights



DDH #	From (m)	To(m)	Width (m)	Au g/t	Ag g/t
DN20-10	90.68	96.93	6.2	5.3	35.88
DN20-18	227.91	231.65	4.95	6.03	597.39
DN20-19	154.84	161.85	7.01	5.3	86.39
DN20-20	109.2	111.48	2.46	17.5	815.98
and	139.67	143.1	3.43	4.14	38.6
DN21-09	242.4	246.6	4.27	7.13	911.0
DN21-10	225.3	228.35	3.05	13.77	2661
DN21-12	210.98	217.99	7.01	31.56	391.27
DN21-15	152.44	163.41	10.98	3.43	1039.95
DN21-17	191.46	200.61	9.15	6.87	530.67

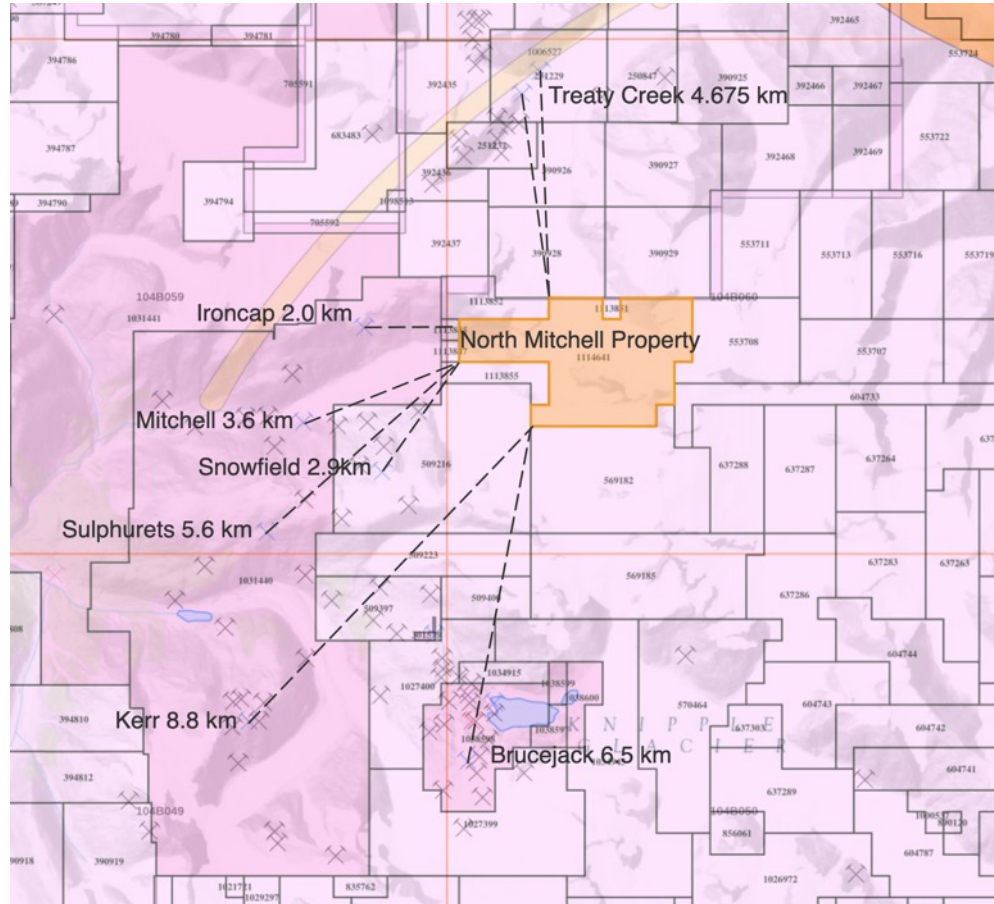
NORTH MITCHELL

The North Mitchell property is in the Golden Triangle with a combined number of reported gold ounces within 8 deposits situated in 3 directions around the North Mitchell Property (measured, indicated + inferred) is estimated at 201.67 million oz+/- as follows:

1. KSM's Iron Cap deposit is located within 2 km, with a combined resource of 36.1 million oz Au
2. KSM's Snowfield deposit is located within 2.9 km, with a combined resource 34.9 million oz Au
3. KSM's Kerr, Sulphurets, Mitchell deposits, total a combined 88.3 million oz Au, located 8.8 km, 5.5 km & 3.6 km from North Mitchell respectively
4. Tudor Gold's Treaty Creek deposit is within 5 km, with a combined 27.87 million oz Au
5. Newmont's Brucejack & Valley of Kings deposits are within 6.4 km, with a combined 14.5 million+ oz Au (one of the highest grade gold mines in the world)

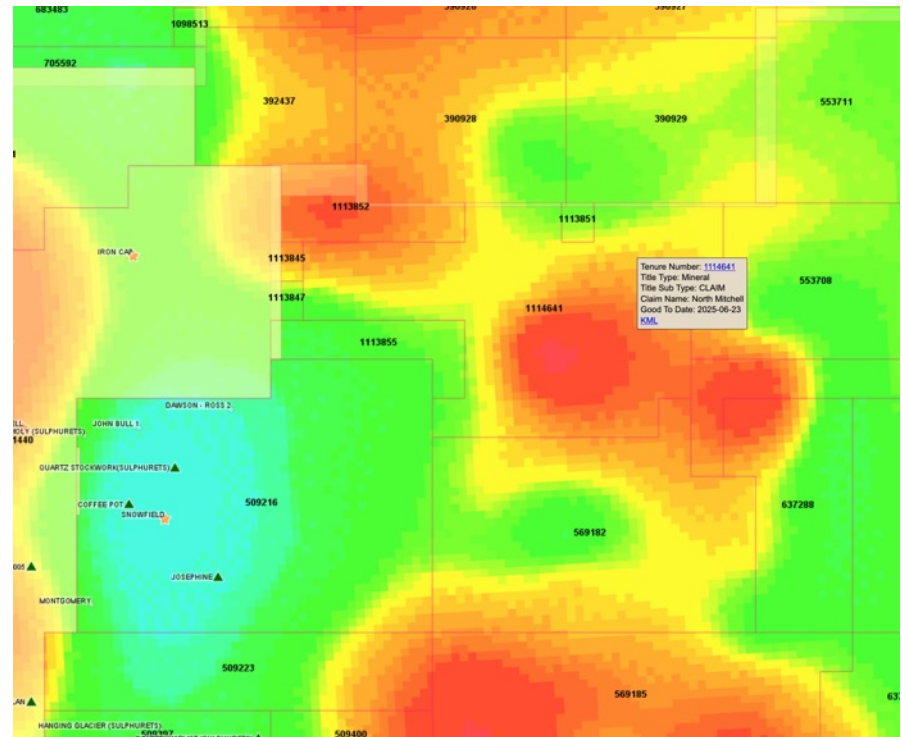


NORTH MITCHELL

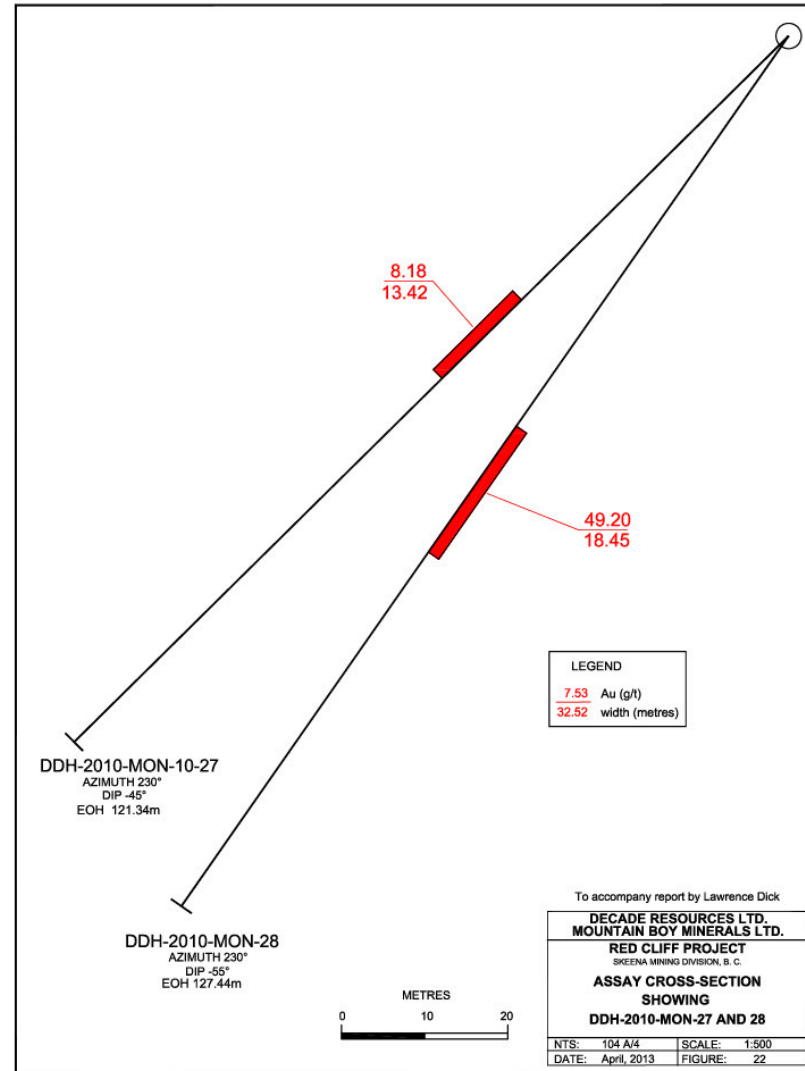


NORTH MITCHELL

- Texas Creek Plutonic suite rocks which are Jurassic age intrusions - 193-195 Ma are found near Stewart, including the Mitchell intrusions at Kerr-Sulphurets-Mitchell.
- They are both related to mineralizing events in the Stewart area and Sulphurets-Mitchell valleys.
- The suite of rocks is associated with gold mineralization at Brucejack Lake, Premier gold mine-Silver Coin deposit and the Scottie gold mine as well as numerous porphyry copper gold occurrences.
- The area of the North Mitchell property is located over a magnetic high indicating a buried intrusive.
- Sericite altered rocks along the lower levels of Mitchell Glacier indicate the presence of hydrothermal alteration.
- Grab sampling in 2025 returned 116.9 g/t Au, 161 g/t Ag, 3.01 % Pb and 5.6% Zn in new discovery.



RED CLIFF PROJECT



Drill results for Upper Montrose zone.

RED CLIFF DRILLING HIGHLIGHTS

- Mineralization at Montrose consists of gold-bearing zones hosted by a 30-40 m wide, near vertically-dipping shear zone which can be traced for over 2km, trending north-south.
- Gold-bearing mineralized zones, within the shear zone, have been intersected over a vertical distance of approximately 700 m.
- Initial metallurgical studies indicated gold recoveries of 94.8% and 97.6%, respectively for 2 separate composites of core samples.

MONTROSE ZONE				
DDH No.	From	To	Core Length**	Gold g/t
2009-MON-6	53.66	108.84	55.18	9.64
2009-LC-17	122.56	128.56	6.71	10.42
2010-MON-28	57.16	75.61	18.45	49.20
2010-MON-31	60.37	86.38	25.91	10.94
2011-MON-2	173.17	186.13	12.96	10.06
2011-MON-9	121.71	130.61	8.90	28.10
2011-MON-11	138.57	146.04	7.47	43.74
2011-MON-27	102.90	133.54	30.64	14.52
2011-MON-37	66.68	75.0	8.32	16.50
2012 –MON-3	67.07	71.34	4.27	62.38
2012 –MON-24	84.76	98.78	14.02	14.86
2012 –MON-61	173.93	208.99	35.06	7.83
2017-MON-5	311.28	315.40	4.12	19.9
MON-2018-45	211.89	215.24	3.66	8.94
MON-2018-50	243.96	249.09	5.12	16.56
MON-18-56	236.13	240.24	4.12	8.59

** True width is believed to be 70 % of intersection length.

Bonaparte

The Bonaparte copper-gold property is located approximately 50km north of Kamloops, B.C., within the Kamloops Mining Division. The Bonaparte mineral claims are located on NTS map sheet 92I/16W and 92P/1W, the centre of the property is located at 50°59'38.61" North longitude and 120°26'11.29" West latitude. There are two reported Minfile Occurrences located on the property consisting of (Bonaparte 092 050) and (JS Molybdenite 092INE178).

The property has different target areas including:

- Cu/Au/Mo porphyry potential
- Bulk-tonnage RIRGS target with high grade gold results in historic drilling, trenching, underground exploration**
- High grade gold-copper veins.

Comments from geological examinations by geologists from the British Columbia Geological Survey, Ministry of Energy, Mines and Natural Gas state: *"We speculate that the Bonaparte deposit represents an upper level of a buried porphyry system."* Reference for this is located in: **Bonaparte gold: another 195 Ma porphyry Au-Cu deposit in southern British Columbia?** James M. Logan and Mitchell G. Mihalynuk, British Columbia Geological Survey, Ministry of Energy, Mines and Natural Gas, page 71, 2013.

Bonaparte

Mineralization is associated with a series of near north-south trending quartz veins hosted mainly by a quartz diorite intrusive within an area referred to as the “Discovery Zone” which covers an area measuring 300m east-west by 350m north-south. At least 9 gold bearing quartz veins have been located to date on the property through trenching and drilling.

In 1994 a 3,700 metric ton bulk sample of mineralized vein material from surface trenching to a vertical depth of 12.2m from an open cut on the Nutcracker, Owl, Grey Jay and Crow vein systems, with an average grade of 25.4 g/t Au produced 3,160 ounces of gold. In 2009 a 3m X 3m decline was collared on the Raven vein and the underground development program was designed to evaluate the vein system at depth. A total of 161m of underground development was completed.

In 2010 a small bulk sample from the Crow Vein was shipped to the Kinross Mill in Republic, Washington. The 364-ton sample assayed 16.3 g/t Au (0.475 oz/t Au), yielding 161.95 troy ounces of gold.

In 2013 and 2014, a magnetometer and Volterra 3D Induced Polarization geophysical surveys covered an area measuring 800m east-west which extending to the south 1.2km.

Existing geophysical data indicates the potential for a large porphyry system situated approximately 1km South of the original Discovery Zone. A second and smaller zone also appears to lie below the original Discovery Zone at depth.

Bonaparte



- Photo of sample that assayed 1662 g/t Au, and 0.88% Cu.
- Sample from bedrock vein adjacent to open pit that produced 3160 ounces Au.

CAPITAL STRUCTURE

MANAGEMENT TEAM

Ed Kruchkowski

Position: Director, President

Edward R. Kruchkowski has over 51 years experience in the exploration industry. He graduated from the University of Alberta in 1973 with a BSc in Geology and is a registered Professional Geologist with APEGBC. From 1973 to 1981, he worked for both major and junior companies on projects in Canada and the USA. From 1981 to present, he has worked as a consulting geologist conducting exploration programs in Canada, Southwestern USA, Russia, South America and Mexico on behalf of various clients, including both major international companies as well as junior exploration companies. Mr. Kruchkowski has a proven track record of discovery and supervision on many properties throughout Canada. Mr. Kruchkowski is responsible for all exploration programs conducted by Decade Resources Ltd. & Dinero Ventures Ltd., another TSX-V listed company of which he is a director.

Brian Morrison

Position: Director

Mr. Morrison received a Bachelor of Commerce degree from the University of Northern British Columbia in 2004 and completed the Canadian securities course in 2006. From January 2005 to May 2008, Mr. Morrison was an account manager with Computershare Investor Services Inc., an international full-service financial services, corporate trust and stock transfer company. Since June 2008, he has been a self-employed consultant working in the area of public company administration. Mr. Morrison currently serves and has previously served as a director, Corporate Secretary or as chief financial officer of various publicly traded issuers.

Randy Kasum

Position: Director

Randy M. Kasum has over 29 years experience in road construction for mining and exploration companies in the Stewart, B.C. area. He is the manager of Kasum Tractor Ltd., a heavy equipment company specializing in road construction and mineral exploration. He has been instrumental in the acquisition of properties in the Stewart and Terrace areas. He is responsible for co-coordinating all financial filings on behalf of Decade Resources Ltd. as well as assessment filings on the mineral holdings owned by the Company. In addition to his involvement with Decade, he is a director of Dinero Ventures Ltd, a TSX-V listed company.

Frank Kamermans

Position: Director

Frank Kamermans had an industrial supply business for 20 years serving the resource community in the Stewart vicinity. For the last 27 years he's initiated various businesses including camp construction, expediting, bus service and restaurants. He is currently the owner/manager of the Ripley Creek Inn and has been since its inception in 2000. Mr. Kamermans was President of Mountain Boy Minerals for over 10 years. In 1985, Mr. Kamermans graduated with a Bachelor of Environmental Design Studies and a Bachelor of Architecture.

CAPITAL STRUCTURE (As at March 1, 2026)

Ticker	TSXV: DEC
Common Shares	240 million
Warrants	110 million
Options	14 million
Fully Diluted Shares	364 million